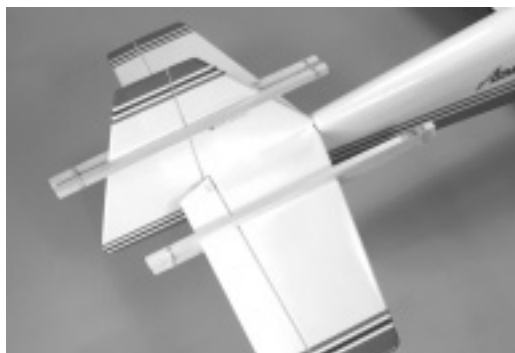


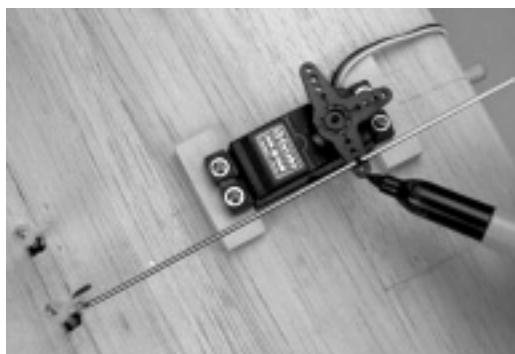


# Making a ZEE Bend



## Step 1

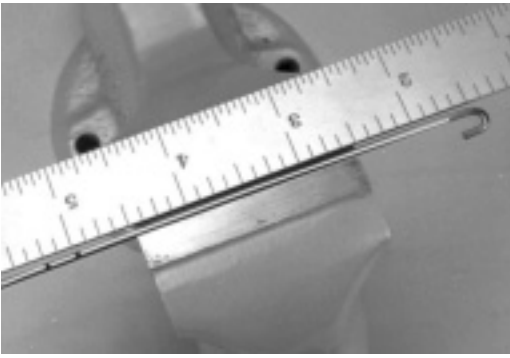
We'll show how to make a ZEE bend in 2-56 rod that gives a nearly exact length pushrod. Use HWB332 for this. If you're working with 1/16" wire use ZEE116. First, lock the control surface in neutral. These photos show two ways to do that.



## Step 2

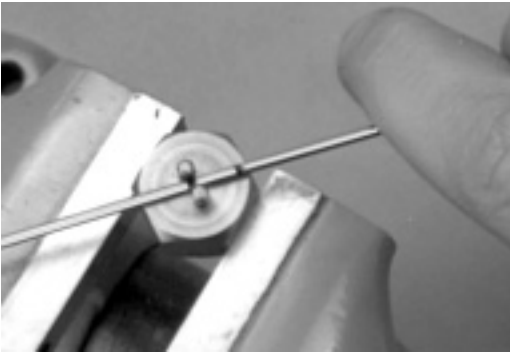
Attach the pushrod to the control surface horn. In the upper photo we made a U bend for this. It might be better to use a clevis, so there will be some way to adjust the length. The next





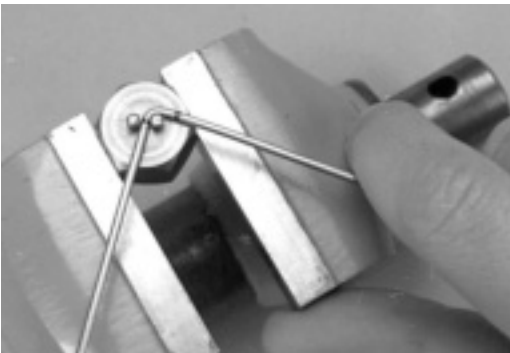
### Step 3

Remove the rod and make a second mark 1/4" further away from the servo end of the rod. Both 2-56 rod and 1/16" wire use 1/4"



### Step 4

Place the rod in the bender with the mark closest to the push-rod end against one of the bender's pins.



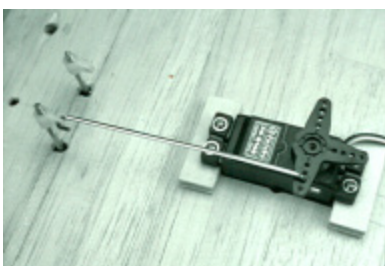
### Step 5

Make the first leg of the ZEE Bend.



### Step 6

Turn the wire over and make the second bend. Use a diagonal cutter to remove the excess wire. You'll need to file any burrs off. A Dremel tool with a cutoff wheel would be a better choice because it doesn't leave any burrs.



### Step 7

This photo shows the completed pushrod installation. No length adjustment was needed